

SYSTEM ARCHITECT FOR DoDAF

Enterprise Architecture for Defense Systems

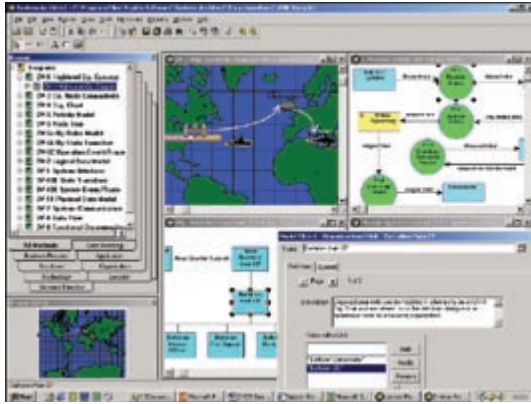


Telelogic System Architect® is the most widely used enterprise architecture tool in support of the Department of Defense Architecture Framework (DoDAF). It is the ideal tool for building models representing Department of Defense (DoD) architectures, auto-generating DoDAF work products, storing all of that work in a robust repository, and publishing the architectures to a wide audience using sophisticated auto-Web site generation facilities.

US Government legislation has placed increasing emphasis on the need for interoperable, integrated, and cost-effective business practices and capabilities within each organization and across the DoD, particularly with respect to information technology. DoDAF helps organizations meet government requirements and other directives by bringing the benefits of general architecture to the DoD, allowing for better systems design and integration, both internally to various departments, and collectively amongst the DoD as a whole.

Concordance Between Architecture Views

In System Architect, graphical renderings of applicable DoDAF products are not simply drawings, but rather a collection of interrelated model artifacts. Hence, data entered for one DoDAF view can be reused in another where applicable. For example, System Architect can automatically build your OV-3 Operational Information Exchange Matrix from your OV-2 Operational Node Connectivity needlines and OV-5 Activity Model, thus deriving what information is exchanged between operational nodes. Likewise, System Architect can automatically build an SV-6 matrix from SV-1 and SV-4 diagrams to enable you to see what system data is exchanged between system nodes, entities, and components. Further, you can use the SV-2 diagram to specify network communications between system nodes



DoDAF diagrams in System Architect

Automating Creation of DoDAF Work Products

Significantly reduce the time and effort involved in developing DoDAF work products with System Architect's DoDAF utilities. Import an existing OV-3 matrix and let System Architect build the OV-2 and OV-5 views. Additionally, System Architect will automatically balance your views to ensure that each OV-2 node has a corresponding OV-5 activity. System Architect utilities ensure a level of consistency of information and overall integrity of the DoDAF work products.

Correlate OV and SV

System Architect enables you to correlate Operational and System View work products. You can assign operational nodes to system nodes, map information exchanges to system data exchanges, and use an SV-5 matrix to correlate operational activities to system functions. This allows you to establish traceability between your operational and system architectures.

Reporting and Publishing

Value from your enterprise architecture is derived by being able to analyze and communicate it. System Architect's robust reporting facilities enable you to perform impact analysis while its native publishing capabilities allow you to generate your DoDAF architecture to a Web site. You can extend this publishing capability further with Telelogic SA Information Web Publisher™, for completely automated, customizable Web sites tailored to multiple audiences.

Customization

No two architecture projects are exactly the same. System Architect is highly customizable through tools available to end-users and administrators. Custom definitions, custom attributes to existing definitions, or entirely new diagram methodologies can be added to the System Architect repository.

Multi-User Repository-Based Development

When modeling an enterprise, it is extremely important that the modeling tool supports multiple users in one single, integrated repository. System Architect provides real-time multi-user support in a robust, database-centered repository. System Architect gives you the facilities needed to support a repository management strategy when building enterprise-wide models.

Integration to Requirements Management and Systems and Software Implementation

System Architect for DoDAF is integrated with Telelogic DOORS® for maintaining traceability and compliance to operational requirements and standards; and with Telelogic TAU® for detailed design and implementation of systems and software.

DoDAF ABM:

- **System Architect provides an option for direct support of DoDAF with the Activity Based Methodology (ABM)™. DoDAF with ABM was created within System Architect under the direction of the Office of the Assistant Secretary of Defense for Networks and Information Integration, or OASD (NII), and in conjunction with MITRE, ACS Defense, and the US Air force.**

WHAT IS DODAF ABM?

- **ABM proposes an architecture development workflow that moves the user through describing the flow of information between operational activities and the flow of data between system functions. Since activities are decomposed and related to operational nodes, System Architect with ABM assists the user in identifying information exchange requirements and producing relevant analysis products for operational views. System functions are decomposed in a similar fashion.**
- **System Architect DoDAF with ABM saves time by automatically producing DoDAF OV-2 and SV-4 views, and OV-3 and SV-6 work products from models; and results in a DoDAF consistent and compliant architecture. These advantages are achieved by generating many of the operational and system products needed for analysis, design, and communications from a core architecture view.**
- **A fully integrated set of other DoDAF products and reports are also part of this implementation. Maintainable sets of standard reference objects used to pre-populate the System Architect repository, which are referenced by the appropriate elements within the architecture, are also included.**

Activity-Based Methodology (ABM) is copyright © 2003 The MITRE Corporation.

For more information about System Architect for DoDAF please visit www.telelogic.com.

World Headquarters

P.O. Box 4128, SE-203 12
Malmö, Sweden
P: + 46 40 650 00 00
F: + 46 40 650 65 55

American Headquarters

9401 Jeronimo Road
Irvine, CA 92618 USA
P: + 1 949 830 8022
F: + 1 949 830 8023

Offices in Europe, America, Asia and
Australia. Distributors worldwide.

info@telelogic.com
www.telelogic.com

Telelogic
Requirements-Driven Innovation